



## XDS PRO-4 Pause/Resume feature

A new software upgrade to the XDS PRO-4 receiver allows the user to Pause and Resume the playback of files recorded in the receiver. This can be used to lengthen local breaks while playing back previously-recorded programs from the receiver. This function may be useful to affiliates of long-form programs such as American Country Countdown (ACC) who need to have the network program “wait” while the station inserts additional material. To use this feature, you must be running receiver software **version 2.0.0 or higher**.

The Pause-Playback and Resume-Playback functions are actuated by closing Opto Inputs accessible from the “Console” port on the receiver.

### Step 1: Assign Functions to Opto-Input GPIs

The receiver’s rear-panel “Console” connector has four Opto-Input GPIs available for user-assignable functions. To assign functions to the Optos, you must log into your receiver’s internal web page by using the Ethernet port on the rear of the receiver (not the web-based Program Scheduler). To determine the IP address of the receiver:

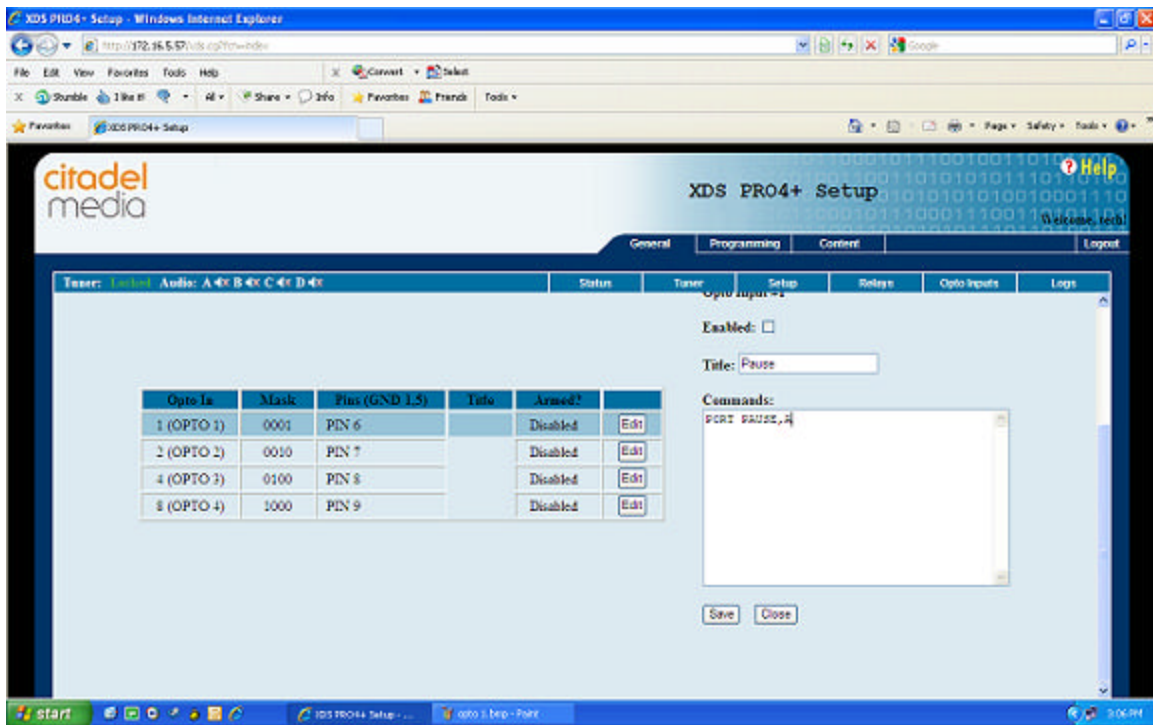
- 1) Press SET
- 2) Right arrow to SETUP
- 3) Press SET
- 4) Right arrow to NETWORK
- 5) Press SET
- 6) Right arrow to LAN address

You must be running receiver software **version 2.0.0 or higher**. Connect your PC to the Ethernet port of the receiver and enter that address into your browser’s address bar. Some web browsers require you to precede the IP address with <http://> when you type it into the address bar. Login is (U) tech (P) radio.

Once you are logged in to the receiver’s web page, click on the “Opto Inputs” tab and you will see this screen:

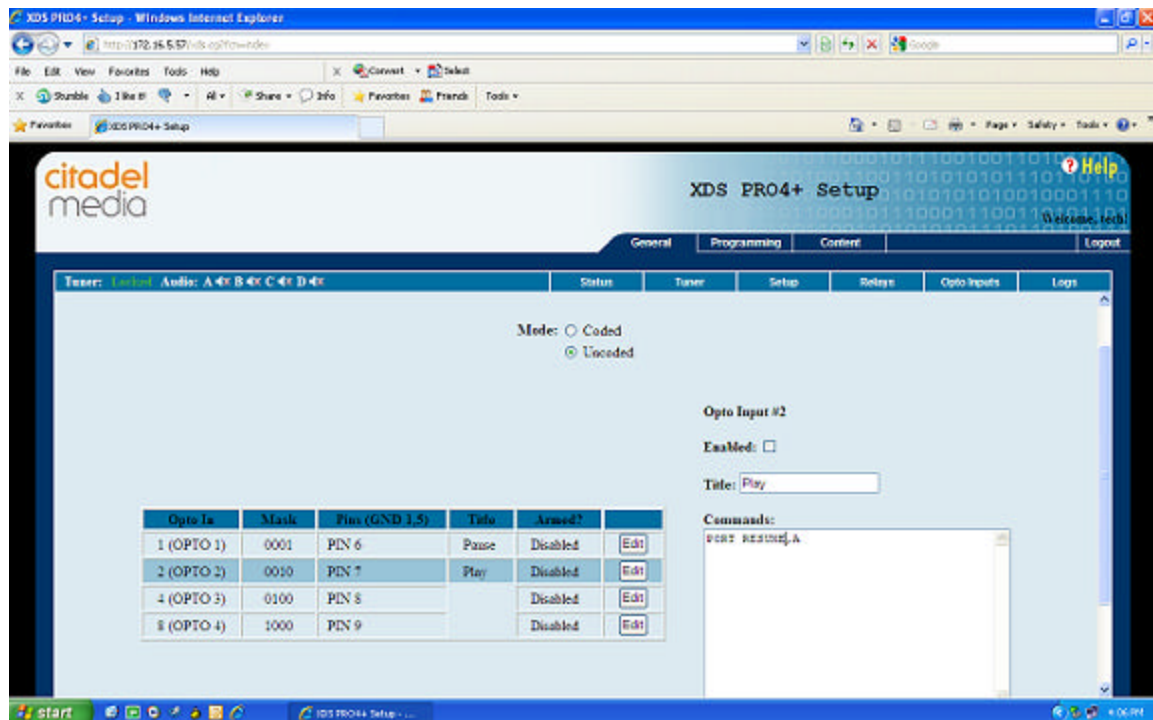


Each of the four Optos corresponds to a pin on the “Console” DB-9 connector on the rear of the receiver. To set a function to an Opto, click on the “Edit” button associated with the Opto you’ll be using. If you Edit Opto #1, the screen should now look like this:



The command PORT PAUSE,A has been entered in the command box. Save the changes and this will pause a playback on Audio Port A when Opto #1 is momentarily grounded. Optionally, you could choose to place this Pause function on Port B, C or D.

The screenshot below shows Opto #2 set up to Resume Play on Port A. The command is: PORT RESUME,A



When done, click Logout.

## **Step 2: Wiring Opto functions for Pause/Resume**

Now that your Optos are programmed correctly, you can either wire both functions to your own closures, or you can use a special Netcue that Citadel is providing to automatically pause the playback just prior to the start of each program segment within American Country Countdown (ACC). We have assigned Netcue H04 to fire just prior to each ACC program segment, so you can Map Netcue H04 to a Netcue relay and then wire that closure to pause the playback. If you use "Pause" Netcue H04 to pause the playback, the next segment will be cued up and ready to play when you apply a "Resume" closure.

**Rear-Panel “Console” Connector Pinout:**

- 1- Alarm Relay Form A / pole 1 (N.O.)
- 2- RS232 Serial Terminal Transmit
- 3- RS232 Serial Terminal Receive
- 4- Alarm Relay Form A / pole 2 (N.O.)
- 5- Signal and Opto Ground
- 6- Opto Input 1
- 7- Opto Input 2
- 8- Opto Input 3
- 9- Opto Input 4

To actuate an Opto function, momentarily connect the desired Opto pin to Pin 5 (Ground).

If you want a board operator to actuate the Opto function, wire it to a pushbutton switch. If you want your station automation to fire the Opto function, wire it to a contact closure output of your automation.

**Sample implementation for ACC Pause/Resume:**

